

CORE CONTROL



CORE Control 1 Overview

The AGILE CORE Control 1 management system is the datacenter hub for all AGILE field communications gear. The CORE Control 1 Server extends the native functionality of Mobile CORE, Twin CORE, Marine CORE, CORE CommsKit and CORE Patrol systems with additional, remotely hosted software and features, including MMS support.

CORE Control 1 is the registration point that the field unit's check-in with, as they power up and while they are in operation. CORE Control 1 enables advanced functionality such as remote monitoring, system configuration, and system updates greatly reducing the amount of physical management and maintenance required.

- See the status of all CORE systems in your network.
- Configuration management includes bulk installations, automatic update, call home and remote provisioning.
- Intuitive drag and drop Windows for stress-free use and simplified training.
- Accounting management includes management of call detail records, performance management and extensive customizable statistics.

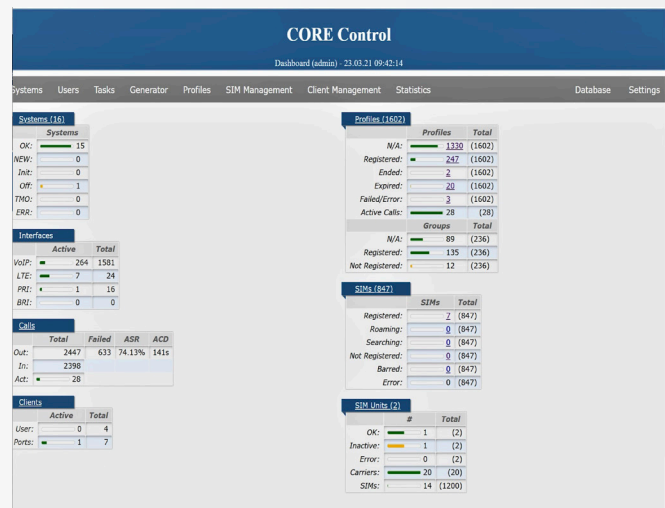


AGILE ROUTING

Our devices automatically search for the best throughput connection available. There can be a cell tower connection of LTE and as your mobile, if connection is lost, it will automatically connect to satellite. As you continue to be mobile, if the device finds a LTE connection 2 minutes later, it will automatically connect from satellite to LTE, hands-free. The customer does not have to monitor Agile routing.

About AGILE

AGILE and our flagship product CORE were born out of our own real-world need to rapidly re-establish critical business communications in the aftermath of a hurricane which crippled local infrastructure. With a deep understanding of communications technology, extensive operational experience, and a passionate commitment to supporting our customers, AGILE is able to deliver best-in-class interoperable solutions.



CORE Control 2 Overview

Larger operations and fleet services that use multiple SIMs will benefit by adding the optional CORE Control 2 SIM library. This is a remote hub wherein the organizations SIMs are stored in a central secured location and virtually loaded into AGILE CORE units deployed in the field. This provides security and management of the organization's SIM card pool. SIMs can be reused in other CORE units when a CORE system is idle. SIMs can be assigned based on the CORE units location for best LTE coverage allowing for on-demand enhancement of LTE capacity and carriers.

- No time consuming travel and service outages to maintain SIM cards in an active CORE system this reduces downtime and keeps units in service.
- A single SIM can be used in different locations at different times in the day for voice, SMS, MMS, and data. When a unit is not in service, reuse the SIM in an active unit to reduce the number of billable accounts an organization must fund.
- CORE Control 2 stores the physical SIMs. The SIMs can be from various carriers and countries as needed for virtual download into any CORE system.
- Real-time alarm signaling of current status, flexible SIM timer settings and flexible scripting interface populates automatically.

MORE BANDWIDTH LESS EXPENSE!

WE ARE AGILE

We engineer the hardware. We design the software. We build the solution. With committed support.

AGILE

(202) 827-6301 / SALES@AISINTEROP.COM / AISINTEROP.COM
Bethesda, MD. Sunrise, FL. Berlin, Germany.

AGILE CAGE: 7WTH2* AGILE DUNS: 080324701* NAICS CODE: 334220* GSA MAS CONTRACT NUMBER: 47QTCA19D0052